

# Annual Impact Report 2023/24

Company Registration No 00820660  
Registered Charity No 222533





It is my pleasure to present to you our CANW Annual Impact Report for 2023-24. We have seen a year of significant changes this year, notably with the retirement of our long serving former Chief Executive Sue Cotton who retired after 14 years in March 2024. I would like to take this opportunity again to thank Sue for her unwavering support and dedication to CANW and wish her well in her retirement.

I would also like to extend my sincere thanks and gratitude to my fellow trustees who have supported me to steer the charity through a year that has not been without its challenges. However with the external review of our governance arrangements confirming the robust systems in place, we have presided over a very productive and successful year.

I would finally like to thank our wonderful staff for delivering the services that children and adults tell us they need every day. CANW's strength is in our people and the quality and skill of professionals who live our shared values every day. I am confident that our refreshed Leadership Team are very well positioned and supported to take CANW to the next phase of development, in line with the original purpose set out by James Dixon back in 1886 when he created safe homes for children in the Lancashire area. **Marguerite Webb | Chair Person**

I am delighted to present my first Annual Impact Report as Chief Executive of CANW. This report demonstrates the importance of listening to the voice of our children, vulnerable adults and families when designing the services we deliver. We have maintained high standards of integrity and improvement this year, recognised by our service users, commissioners and external regulators Ofsted, securing an overall Good rating in our inspection, among several other assessments of successful validation processes across services.

Our governance systems have been strengthened from undertaking an external expert review of our decision making arrangements at CANW. With a refreshed leadership structure and new and established Senior Managers in role we have demonstrated the importance of designing our refreshed values and behaviours needed to deliver the new strategic business plan for 2024-2027.

Despite a lot of change and uncertainty this year, CANW services and our reputation for excellence has gone from strength to strength. I am delighted to secure our Investors in People standard - reflecting on the passion and commitment from our workforce to deliver the best possible outcomes for children.

I am really proud to deliver to you this Impact Report to give you an insight into the difference we make to people's lives every day and our journey to embrace our next chapter for charity growth and innovation. I would like to express my thanks to our amazing trustees, staff and volunteers for everything they do to make such a difference. **Alison Stathers-Tracey | Chief Executive Officer**



## 'INSPIRING LIVES, CHANGING FUTURES'

The Charity provides a broad range of services to support children, families and vulnerable adults. Currently the work with vulnerable adults is primarily in the Criminal Justice service and the charity is actively reviewing opportunities to provide additional services where there is identified need. The region of operations is very diverse and includes areas of deprivation alongside affluent and prosperous areas. Across the region there is a general diversity within the population and the charity monitors service delivery to ensure it is representative of the communities it serves.





**OUR VISION:** That everyone gets the support they need, when they need it, to navigate the challenges they face in their day to day life.

## **WE LIVE OUR VALUES:**

**We Never Give Up:** We believe in those we support and will do everything we can to promote and encourage individual positive growth and change.

**We Care:** Kindness, caring and concern for those around us is at the heart of everything we do.

**We Empower:** We empower people to believe in themselves and their ability to take control of what happens in their lives, to become stronger, more independent and confident.

## **Objective One**

### **Growing our Impact & Innovation**

Over the next 5 years we aim to address the increase in need for our services through growth and operational excellence, delivering services that will make a positive difference to life chances and increasing the number of children and families accessing our services. We will identify and meet gaps in support needs to ensure that those who need our services are able to access them in a timely and accessible manner.

## **Objective Two**

### **Operational Excellence**

Operational excellence that delivers the right support, at the right time, with the right outcome.

## **Objective Three**

### **Sustainability**

A well-governed and financially sustainable organisation that looks after its people and lives up to its values.

## **Objective Four**

### **Speak up and Speak out**

We will speak up and speak out about the inequities that affect the people we support.

Child Action Northwest (CANW) operates primarily in the Northwest of England, predominantly in Lancashire, Greater Manchester and surrounding area, including Cheshire East and Cumbria. For specific services the geographical delivery covers a wider footprint across the north and west of England and in to the Yorkshire and Humber region and Midlands.



# **CANW provides a range of services under the following headings:**

**We work alongside families to ensure young people receive the care and support they need throughout their formative years and into early adulthood.**



## **Care & Accommodation**

We work with young people across Lancashire, Cumbria, Greater Manchester and Yorkshire who, for a whole range of reasons, require the support of a foster carer. We're incredibly proud of our foster carers – they're an hugely important part of the CANW team.

## **ProContact**

This service became part of CANW in 2014 and is a regional leader in contact services. The team operates across North and West England, offering a range of services for families to help make informed decisions about safe and sustainable contact arrangements. They work hard to enable and promote contact for children and their family and support parents to improve co-parenting and to reduce conflict.



**The Emotional Health and Wellbeing of children and young people has been central to our work for many years and we are proud to deliver a range of services across the region that directly focus on this area.**



## **Family Support and Wellbeing**

We aim to improve the emotional health and wellbeing within children, young people and families to help them understand and manage their situation, leading to sustainable outcomes. The Family Support and Wellbeing team offers early intervention and preventative services across all age groups. This includes working with young people in school and education settings across the region (1-1 and in groups), a new mental health awareness programme for young farmers, support for young carers (young people aged between 5-18 with a caring responsibility at home) and much more.

**CANW prides itself on being a charity that works alongside and embedded within communities. We work hard to understand the needs of those we support and develop programmes of support that directly target these requirements.**

## **Criminal Justice/Social Inclusion**

We strive to engage and support children, young people and vulnerable adults in order to improve life chances. We aim to reach and support those who have entered, or are at risk of entering, the criminal justice system. Staff work to develop trusting relationships to achieve positive outcomes.

The main focus of our work within Criminal Justice is the provision of appropriate adults (AA). We also offer restorative justice and statutory reparation services. Our social inclusion team delivers pre-employment and educational support along with offer early intervention, preventative and therapeutic programmes.



# Care & Accommodation



**39**  
children  
in foster  
homes



**FOSTER FAMILIES**



**Foster Carers**

Our **Care & Accommodation service** comprises of a registered fostering service.

The foster care service has been running for over 20 years and provides good quality foster homes for all the local authorities across the Northwest of England who ensure a sufficiency of placements for the children in their care. The service operates a number of different fostering schemes to meet the varying needs of children. We are an inclusive service and tailor our care offers to meet the needs of the young people to help promote their identity and potential.

We work with young people from 0 to 18 years within the fostering service with the aim of providing stable home environments and support which enables young people to meet their potential and stay connected to the significant people in their lives.

“

We thoroughly enjoy the fostering role and it has become a way of life for us - we are positive and resilient and love all three children treating them equally.

**Foster Carer**

We have really enjoyed fostering under CANW in the last year and our experience has been a good one. Not only have we had a placement, we receive regular referrals and good support from our supervising social worker. Unlike our last agency we feel CANW is responsive to our needs.

**Foster Carer**

”

## Professional Feedback

From my limited involvement so far, it is clear that carers are supporting F in their home and also promoting her independence whilst supervising and ensuring her safety. She is allowed independence in accordance with her age. F seems to be well looked after in a spacious, clean, safe home with her own room.

I have only recently started working with carer L but in the short period that I've been involved with the children placed with her, I have been very impressed by how nurturing she is as a carer for the children placed in her care. These are young children who are very demanding with history of neglect. L has shown immense commitment to these children. She is very responsive and attune to their needs.



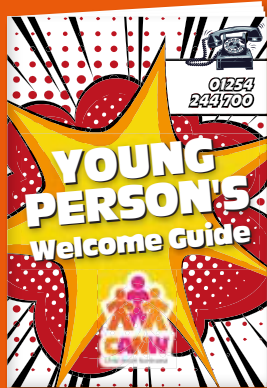


Ofsted Inspection undertaken October 2<sup>nd</sup> - 6<sup>th</sup> with an overall judgement of GOOD.

The 2023 Annual Care conference was well attended and allowed carer participation and sharing of questions and potential service developments they wanted CANW to consider.



'Men in Foster Care' training & support group: February 2024



Regular activity days continue to be offered and delivered to the families and children in placement. Play Factor Manchester, Worden Park, pumpkin carving for Halloween, snowboarding & sledging, Wacky World activity centre and many onsite leisure activities of arts & crafts, baking & games.

Opportunity is also provided for children and young people to take part in decision making around what activities they want to see CANW provide.



Prior to placement KP had been living in a residential home and had been used to a number of adults meeting her needs. Due to her disability and medical needs KP was totally dependent on the adults around her.

KP had a lengthy introduction with foster carer Janet which started in Sept 2015, before moving in May 2016. This enabled Janet to learn all about the medical devices and physical elements needed for KP's care.

Over the next 9 years carer Janet worked day and night in support of KP, managing the complexities of her medical needs and providing a wealth of experiences to support and increase positive personal growth and development for KP. All through this journey our carer advocated for KP, facing huge obstacles and challenges with professionals and the cash strapped Local Authority.

Due to the high level of care afforded to KP by Janet's relentless input, KP had her tracheostomy successfully removed in Jan 2018 and her port-a-cath removed in Aug 2018.

In 2023 KP turned 17yr old and questions were being asked about her transition into adulthood. Our carer Janet was not about to give up on KP and we as an agency supported her and KP to secure a move on from fostering into an individual package of Shared Lives care, meaning that she would remain with her carer Janet.

KP has grown and developed into a lovely, happy and content young woman. She has a level of independence that was not thought possible for her when she first entered care. She is now mobile with a frame, communicates using language tools, signs and symbols and has been attending a local college for the last year.

# ProContact

ProContact enables contact and reduces parental conflict. Families are usually in private court proceedings and have had a breakdown in child arrangements.

**ProContact opened in 1999 and joined CANW in 2014**

## Planning Together for Children (PTC)

PTC aims to improve co-parenting, delivering PTC across the Northwest of England.



**1547**

**PARENTS**

supported  
by Child Action  
Northwest



**91%**

**PARENTS**

state '**high satisfaction**'  
with the programme and  
support offered.



**PARENTS** rated us



4.8 for our  
programme worker.

**96%**

**of PTC  
PARTICIPANTS**

reported they will take  
action to place the  
child at the centre of  
all communications  
and agreements.



**93%**

**of PTC  
PARTICIPANTS**

improved their  
understanding of  
of the impact of  
family conflict on  
children.



“

### PTC Parent Feedback

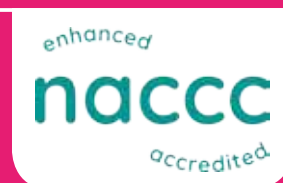
This session did make me  
realise certain behaviours  
may affect the children &  
will definitely be adjusted.

A good service provided  
with care and attention.

”

## Contact Services

Contact Services often re-establishes or maintains contact in both private and public law proceedings or as a long-term solution to family time. Contact Services operates from CANW Bolton and CANW Wilpshire.



“

You have been truly wonderful in the time 'CHILD' and I have attended. Always accommodating, friendly and considered. You all do a great job there, and for parents (and children) who find themselves in this situation, you are a source of great support.

**Contact Services Parent**

”



**109  
FAMILIES**

supported at the  
contact centres

# Improving Child and Family Arrangements (ICFA)



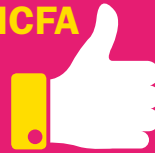
ICFA NORTH & WEST support families with sustainable child arrangements and makes recommendations to help families move forward. CANW delivers ICFA and operates across the North and West of England with nine subcontractors.

**57%\*** PARENTS said ICFA improved their parenting plan



\*compared to National score of 45%

**63%\*** PARENTS said ICFA improved their communication

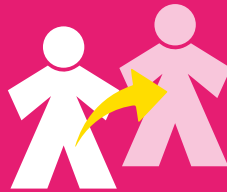


\*compared to National score of 52%



Child Action Northwest

**236** referrals



subcontractors

**202** referrals

“

## ICFA Feedback

Worker gave parents appropriate guidance and challenge and supported with making plans and next steps.

ICFA had an excellent and significant impact for this family. Because of this intervention, 'CHILD' is now having a positive relationship with his dad.

ICFA were extremely supportive with the family, whilst being open and frank about concerns and communicated with the child and family well - this contributed to an agreed outcome.

”



Child Action Northwest

**236** referrals



subcontractors

**220** referrals





# Emotional Health & Wellbeing

Received

**2463**

referrals



**100% OF PARENTS**

would recommend CANW services to other people



**2397**  
young people supported



**66**  
parent/carer supported



Working in

**11**  
SCHOOLS



**11,646**

sessions delivered  
young people & adults

**96% PARENTS**

reported an improvement in their child's emotional regulation



**98% PARENTS**

reported an improvement in their child's emotional health & wellbeing



**98% YOUNG FARMERS**

enjoyed the sessions 'a lot'



“ It was fantastic and I learned a lot. I have enjoyed the class and I wish it was longer, I have made friends I would love to have more things like this because they have helped me so much and I am sad to leave. - **Think Family**

It's been fabulous 10yr old & K has been brilliant, and genuinely helped me so much I wouldn't be where I am now without her help, I'm so grateful and my mental health has improved so much. Thank you! - **Young Person aged 17**

My child has shown massive improvement in all areas of her mental health since seeing D weekly in school. My daughter loved seeing her and we are both very grateful for her help & our child responded well to completing a worry diary and filling a box with pieces of paper with all the things they are good at on them. - **Parent/Carer**

I liked the way our facilitators linked our knowledge of farming to their mental health knowledge & I enjoyed how everyone came together to share ideas, and we all had a conversation where everyone felt open to be able to express their thoughts. - **Young Farmers**



The **Emotional Health and Wellbeing (EHWB) service** provides therapeutic interventions to children and young people, their families, and adults across Lancashire, including Blackburn with Darwen, South Cumbria and Greater Manchester. The service is delivered by a dedicated team of counsellors, play therapists and therapeutic practitioners, via a blended offer of face to face, remote, 1-1 and groupwork interventions which are tailored to the needs of the individual. Working in collaboration and partnership with statutory and voluntary organisations, the EHWB service aims to develop mental health awareness, improve resilience, build on strengths, and achieve positive and sustainable outcomes.

## LCC EHWP Early Support Service

A partnership with 10 partner agencies offering time limited interventions to children and young people aged between 4 and 19 years (25 Special Educational Needs (SEND)). This project covers East, Central, and North Lancashire (excluding Blackburn with Darwen and Blackpool) and works in partnership with the Children and Family Wellbeing Service supporting children and young people via an early help offer.



## Commissioned School Service

A bespoke service funded by schools across Lancashire, Blackburn with Darwen, Cumbria and Greater Manchester delivering therapeutic support to children and young people aged 4-18 years facilitated by 1-1, group work or drop-in support services.

## Children in Care Project

A 12 month pilot programme (Our Voice) extended to March 2025, seeking further funding to offer a therapeutic support package to children in care, including 1-1 and group support sessions, diversionary activities to support children and young people, their foster families and birth families. The aim of this project is to gather data to measure the effectiveness of the interventions and to support children and young people to build resilience.



## iThrive Programme

Commissioned by the Bolton Together consortium to provide 1-1 and family support to children aged between 4 - 8 years, support offered to parents and carers to enable a sustainable intervention. Programme now completed due to council funding reductions and challenges to recruit to this area.



## Young Farmers Project

Funded by various grant funding applications and benefactors to support young farmers (10 - 25 years) and their families to raise awareness of common mental health issues building resilience and strategies to manage mental health and promote effective and healthy coping strategies.



## Think Family

Funded by Blackburn with Darwen this is a 6 week therapeutic group work programme for parents in Blackburn with Darwen aimed at raising parents' self-awareness to improve relationships and build resilience, self-confidence and self-esteem.



## PATH (Peer Advice to Transform Health and wellbeing)

Began as a 12 month project (SPACE) consortium funded to facilitate a peer support group for parents and carers across Lancashire. This has completed and been rebranded and extended to a 3 year project. Supporting parents and carers in BwD in a peer support led group project delivery model. We are coming to the end of the consultation period with parents and carers in the borough and will be using the data collected to inform how and where groups will be offered.



# Young Carers

The Young Carers service supports young carers aged 5-18. Young carers are children and young people who are looking after a parent or sibling with an illness or disability, mental health problems or alcohol/substance misuse issues. Our aim is to look at how to reduce a young carers caring role; signposting families to appropriate services; moving young carers onto universal services once their intervention is complete.

Offering respite proved popular as always - with friendships formed and the friendly card game UNO reaching new competitiveness heights! Our young carers experienced a variety of sessions including mindfulness, visiting a fire station, school nurse talks on keeping healthy, as well as cinema and McDonalds trips!

**360**  
**YOUNG**  
**CARERS**  
**supported**  
in Blackburn with Darwen



## Participation Voice

Our young carers played an important role when CANW were looking to recruit for a new CEO. A group of our young people looked to ask some hard-hitting questions to the candidates, ranging from what the candidate could bring to the role and how would they support CANW's young people.



Ian\* is a 14 year old boy with autism who supports his mum who has epilepsy. When initially starting the assessment Ian\* was not in school as his past school was not meeting his needs.

On carrying out the assessment it was found that despite Ian's\* own needs it was still felt he was in a caring role for mum as he would support mum when she had a seizure. Ian\* struggled to express his feelings due to his autism, however mum felt he struggled to leave her due to her health conditions. This attachment was intensified due to Ian\* being at home more due to him not being in school, intensifying his issues around education and struggle to socialise with others.

Whilst working with Ian\* he started at a specialist school who were able to manage his needs. They were informed of his caring role and committed to help better support Ian\* and ensure he was ok at school, where he is now settled.

Due to Ian's\* own needs, it was felt that the young carers group was not appropriate. It was felt that Kaleidoscope would be a better form of respite for both Mum and son as they would be able to manage the autistic needs. 1:1 sessions included accompanying Ian\* to meet with TYS, where he now regularly attends the group sessions.

As mum was also a carer for Ian\*, a referral was made to the Carers service where they supported her with her benefits. Mum was also referred to CANW's Family Autism Service where Mum was offered support help manage Ian's\* autistic needs. At review, every aspect of Ian's\* outcome star showed a marked improvement.





## Summer Residential

We had some very excited young carers over the summer who were all looking forward to a well-deserved break as we took them on a residential trip to Borwick Hall in Carnforth! Trips to the beach, canoeing, orienteering and wall climbing were all on the itinerary and the young carers thoroughly enjoyed the break – especially the haunted walk in the middle of the night! One young carer stated that it had been ‘a brilliant holiday’ and that they felt ‘recharged’ to get back to their caring role.

### Our young carer Ben, was awarded BBC Radio Lancashire Make A Difference with Highly Commended ‘Carer Award 2023’

An award deserving for this caring, thoughtful, polite young man who is very strong and resilient given his caring responsibilities. An inspiration for other young carers.

By attending our group sessions Ben’s confidence has grown and he has now joined the fire cadets through us and is looking to join a regular football team too.



## Wellbeing Champions

Empowering young people to look after their own and others, mental health, offering low level emotional health and wellbeing support to their peers. They are doing a fab job, supporting young people with friendship worries, exam stress, relationship issues, etc.

With the knowledge gained in these training sessions and having the confidence and awareness to recognise when someone is struggling, they will be able to begin a conversation about well-being and give links to people and organisations that can offer help and support for that individual.

We launched the WBC video at the celebratory event – WBC schools and community partners showed a commitment to continuing to share the WBC message by promoting this video on their screens and in assemblies and PSHE classes – introduced by the WBCs themselves.

**92**  
**YOUNG**  
**PEOPLE**  
trained as



Wellbeing Champions  
across Blackburn with Darwen

Working  
across



**6** **SCHOOLS**  
and  
**3** **COMMUNITY**  
**PARTNERS**



### Witton Park Academy’s perspective:

Having the time and experience of the staff at CANW has been valuable in setting up mental health provision in school.



# Family Autism Service

Our Family Autism Service offers low level support to families with a child up to the age of 25, who are seeking or have an autism diagnosis in East Lancashire and Blackburn with Darwen. The service provides a wide range of vital services to address the specific needs of these families.

**Delivered various workshops which included the sharing of strategies for parents and the young people:**

- Parent support groups online
- Preparing for Christmas session
- Managing behaviour/meltdowns
- Managing friendships
- Sleep workshops
- Autism awareness (pre diagnosis)
- Accessing the community

Regular activity days continue to be offered and delivered to the families including siblings. Opportunity is also provided for children and young people to take part in decision making around what activities they want to see CANW provide.

Activities: Snow tubing, Geek retreat, Sensory Gym

**NHS**  
Lancashire and  
South Cumbria  
Integrated Care Board

**SPRING  
NORTH**  
COLLABORATION + INNOVATION + IMPACT



**157**  
young people  
attending  
sessions

**425**  
parent/carer  
attending  
sessions

**620**  
PARENTS  
receiving  
support

Received  
**248**  
Professional  
referrals

**390**  
self referrals

**197**  
sessions  
delivered  
both online &  
face to face



I enjoy listening in, my son is only young, so I do enjoy listening in to everyone's input. I haven't attended many as of yet but so far really helpful useful information for future.

Great venue, ideal for meeting like-minded autistic people. Details were clear about the event and we particularly liked the photos of the venue to help my daughter know what to expect.

My daughter has barely left her room all summer yet managed to attend and take part in today's activity; she loved it and wants to come back.

The team are so knowledgeable and give everyone the opportunity to speak and ask questions. I always come away feeling less alone with the issues we are dealing with as a family.

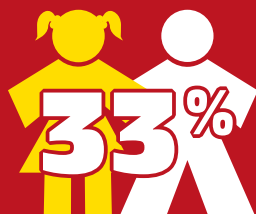
# Criminal Justice

## Appropriate Adults

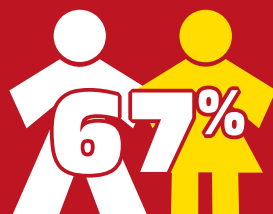
Children and vulnerable adults have spent less time in custody due to the efficiency of the service. 100% of referrals were attended by an AA within 2 hours of request, over 95% within 1 hour.

**APPROPRIATE ADULTS** responded to

**18,957**  
referrals



Children



Vulnerable Adults



CD has been one of the best, if not, the best appropriate adult I've ever had the pleasure of working with. He's always there to help, always available in great time and a hard and passionate worker, showing regards for my side of work and genuine concern for all the victims and suspects I work with.

**Police Officer Greater Manchester**

Innovation is key to continuous excellence and meeting the ever-changing demands of the forces we support. CANW adopts a model of reflective practice, investing in distraction items across the AA footprint, using information gathered through feedback from stakeholders and beneficiaries to inform service model. This approach has resulted in several developments.

## operating across 6 counties:

Cheshire | County Durham | Cumbria | Derbyshire | Greater Manchester | Lancashire

## Statutory Reparation

Our **Statutory Reparation team** delivers support that is designed to help children and young people understand the consequences of their actions and take responsibility for their behaviour. It is for children and young people aged 10 - 17 years who have made the wrong choices and is open to Blackburn with Darwen Youth Justice Service.

**The Super Slow Way project** was a communal multi faith project that supports the local community create a space for growing flax and woad to weave into various materials. The project also gained support with ground maintenance one being at the side of the canal near Audley.



**31**

**YOUNG PEOPLE**  
supported



**141**

**VISITS**  
across 7  
projects

**418**

**HOURS** of  
Community  
Reparation





# Social Inclusion

CANWe CIC  
Solutions

Our **Social Inclusion services** strive to engage and support children, young people and vulnerable adults in order to improve life chances. We aim to reach and support those who have entered, or are at risk of entering, the criminal justice system. Staff work to develop trusting relationships to achieve positive outcomes, delivering pre-employment and educational support, whilst also offering early intervention, preventative and therapeutic programmes.

## Minds 4 All

We have been working with young people aged 16 - 25 across Lancashire that have faced inequalities whilst accessing mental health services. These young people have co-designed a training package that will be delivered to mental health professionals who work with this target group.



Delivered to

**186**

Mental health  
Professionals



**95%**

delegates

showed an  
improvement  
after attending  
the course



Young people  
to receive an AQA  
accreditation in  
public speaking

“ The reason why young people got involved is because they want to see a change in mental health services for other young people - **Young Person**

Great to have the young people involved and hearing positively how they are improving their lives with right help at the right time - **Professional in attendance** ”

## ‘Peer Action Collective’



We are the delivery partner in Lancashire in partnership with Blackburn with Darwen Healthy Living and Inclusive North (formerly Lancashire BME) working with young people to conduct further research and social action on education, a topic which PAC has identified as crucial to making their communities better places.

Through PAC, young people will investigate issues and solutions and turning what they find into action. ‘Peer Researchers’ will design and carry out research with young people who have experiences and opinions to share. ‘Social Action Leads’ will create social action projects with ‘Changemakers’ to tackle some of the most persistent issues young people face in education.

## Youth Engagement

Received small funding to deliver outreach work in Clitheroe & Hyndburn over summer 2023. Sessions were positive, diversionary activities utilising our mobile media unit.





The SPF programmes, funded through the UK Shared Prosperity Fund, have been a transformative initiative across the region, supporting economically inactive individuals into employment, education and training while providing essential wellbeing, health, and housing support.

- Economically Inactive Engagement
- Social Exclusion
- Basic Skills
- Mental & Physical Health Support
- Job Search & Employment
- Education & Volunteering
- Community Engagement

“ I used to feel really isolated, but volunteering has helped me meet new people and feel part of something again.   
 I never thought I could get a job, but with the help from the programme, I found something that fits my skills. It feels like my life is finally moving forward. ”

**14**   
participants  
involved in  
community groups

**18**   
participants  
engaged in  
volunteering

**65**   
Adults  
supported

**13**   
participants  
into employment

**9**   
participants  
into education

## Break the Cycle



The programme, funded by the PCC & National Lottery, was launched to provide critical support for young people who have been released from police custody without charges. These individuals often face challenges such as mental health struggles, educational disengagement and the risk of re-offending. The programme fills a crucial gap in existing services by offering: mentorship, education and mental health support, empowering these young people to build positive futures.

- Holistic Family Support
- Mental Health & Wellbeing
- Increased Confidence & Resilience
- Meaningful Engagement
- Employment & Education Support


Moving forward, Break the Cycle will continue to collaborate with community partners and adapt its approach to meet the evolving needs of young people, ensuring that every participant has the opportunity to break free from cycles of disengagement and re-offending.



**32**   
Young  
People  
maintained engagement

**6**   
participants  
developed greater  
emotional control  
and resilience

**8**   
participants  
reported an  
improvement in  
their mental health

**14**   
participants  
increased their access  
to developmental  
opportunities

# A BIG HEARTFELT THANK YOU

Don't forget

*giftaid it*  
making donations  
go further

## Community & Corporate Fundraising

We were once again delighted to be supported by the local community, businesses, schools and many more helping to raise vital funds for us over the course of the year.

**Special thanks to:** Alex Timpson Trust, Napthen's Solicitors, The Senator Group, Blackburn Rovers Community Trust, NatWest Blackburn, Recycling Lives, Bury Young Farmers, Ribblesdale School, Ritherdon, Ella Shaw's Academy of Arts, Hoghton Arms, Lancashire Football Association, Burnley College, Dunelm Blackburn, EFS Global, TVS Supply Chain Solutions, Clitheroe Rotary Bonfire Night, Clitheroe Royal Grammar School, Electricity Northwest, Wilpshire Golf Club, Clitheroe Rotary Club & Coop Wilpshire.

And a huge thank you to everyone else who raised funds for the charity over the course of the year. Without this support from the local community we simply couldn't do the work that we do. Thank you all!



## Donations

Alongside supporting the charity financially, we were incredibly grateful for the donations of chocolate treats at Christmas & Easter, laptops, equipment and much more.

Each year we launch a Christmas appeal to give each child we support directly at Christmas time a selection box and a gift. A lot of the children we support at Christmas aren't likely to receive any gifts at home, so this appeal makes a huge impact. We simply couldn't do this without the support of local businesses, community and members of the public who very kindly donated to us.

Astonishingly, we had over £5,000 worth of gifts donated to us at Christmas 2023. Every single gift went to a child in need and we are so grateful.

### 'Lifetime Achievement' WINNER

With 39 years of service to volunteer support to the young people and staff at CANW, Gordon Fairweather was awarded the Lifetime Achievement award at the Community CVS Awards 2023 for his trustee role.





# Events

We ran a range of fundraising events over the course of the year – thank you to everyone who got involved, sponsored and attended.



**£186,391**

**Fundraising Activities & Donations**  
**£62,788**

**Events**  
**£2,996**

**Grants**  
**£120,607**

## Patrons - Roger Dugdale

Roger has been a faithful supporter of Child Action Northwest for many years. He is passionate about making sure young people get the support they need to manage their mental health and wellbeing, and his ongoing support has enabled us to help hundreds (if not thousands) of young people across the region.

His recent commitment to support us with a multi-year pledge has enabled us to forge a partnership with Lancashire Young Farmers and to pilot supporting their community across the Ribble Valley and beyond.

## Patrons - Blackburn Chemicals

We were delighted to welcome Blackburn Chemicals to our small (but growing!) family of Patrons in early 2023. Family is hugely important to them and they remain a fully family owned business despite their significant growth and success. Their commitment to support us with a multi-year pledge will enable us to continue providing loving foster homes for young people who need them.

# Looking after our team

We're passionate about making CANW an incredible to work – this year we have:

CANW services have supported in excess of:

**25,000**

**CHILDREN, YOUNG PEOPLE  
and their FAMILIES**

across the North-West & beyond

## Employee assistance programme



- Counselling sessions
- Physiotherapy appointments
- Finance advice
- Lifestyle advice
- Wellbeing advice
- Shopping discounts
- Recreational activity discounts.

The pandemic has continued to further impact upon volunteering at CANW. Over the coming 12 months the organisation has a strategy to grow volunteer engagement across many areas of the business.

### VOLUNTEERS



**12**

equating too...



**838.33**  
HOURS OF  
SERVICE



That's the value of

**£8735**

\*pay at the minimum wage of  
£10.42 per hour (as at April 2023)

Registered to become a



offering cashback for various  
health related appointments



**SCAN ME**

## We're RECRUITING...

[www.canw.org.uk/vacancies](http://www.canw.org.uk/vacancies)

We have lots of recruitment at the moment. Please can we ask that you to send out vacancies within your networks & shared across our social media pages.

Find us on:



**CANW**

Child Action Northwest